



CADDY CORPORATION

Food Service Equipment

Air Systems

HydroSave Square Waste Collector

HydroSave

PROJECT:

Square Waste Collector

LOCATION:

**1. Water Usage Savings**

- Recirculating water reduces fresh water and sewage costs
- Unit is equipped with accurate float sensor to ensure no overflow of water

2. Design Flexibility

- Trough feed or free-standing configuration
- Side gushers installed in the waste trough for handsfree pre-scrapping, reducing excessive food soiled in the dishes for subsequent washing by the dish machine
- Large inlet to accommodate steep sloped trough to drive the food waste down the unit

3. Large Capacity

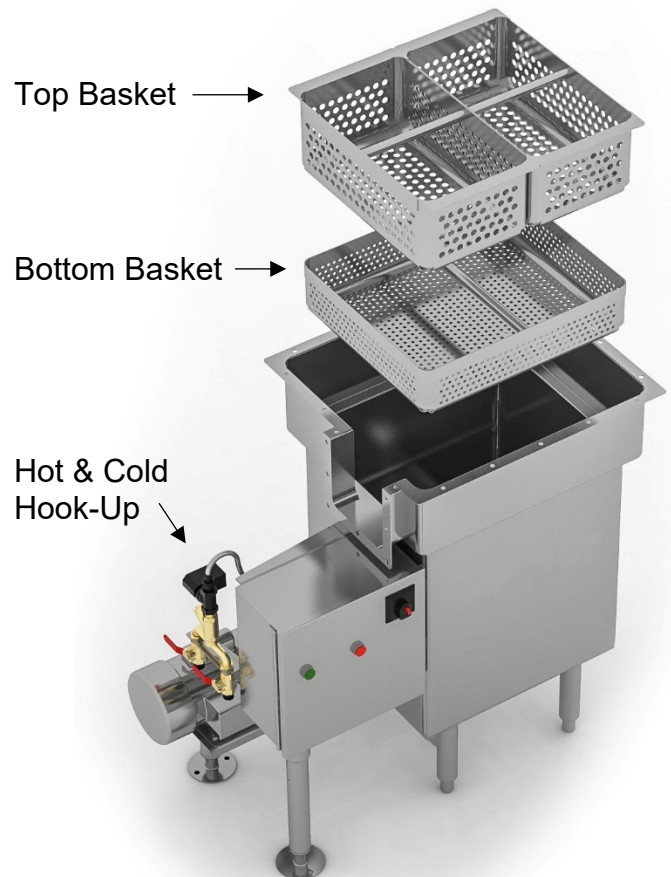
- Innovative 2-tiered design to handle large volume of food waste with multiple basket strainers, making it easier for the operator to swap the basket during the operation

4. Easy of Use

- One push button operation with water filled to the right level to start the operation

5. Powerful Robust Design

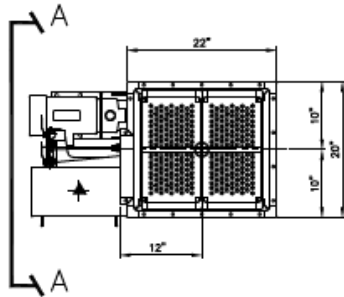
- Type 300 series stainless, 14 gauge stainless steel construction
- Heavy duty stainless steel centrifugal pump and impeller
- Flow rates 70 gallon per minute

**CADDY CORPORATION**

509 Sharptown Road
Bridgeport, NJ 08014-0345
Tel: 856-467-4222
Fax: 856-467-5511
www.caddycorp.com

HydroSave

Square Waste Collector



PLAN VIEW

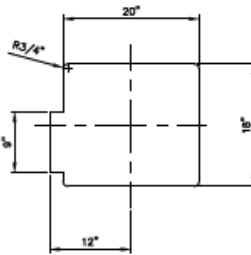
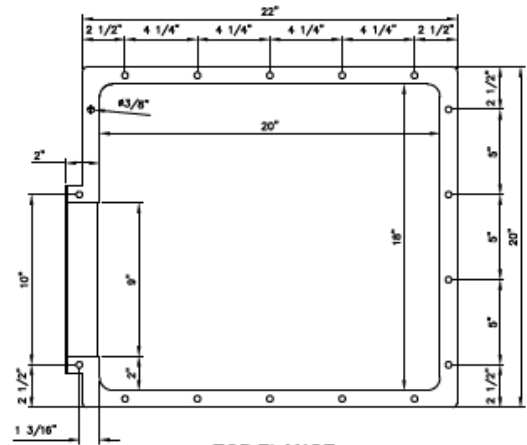
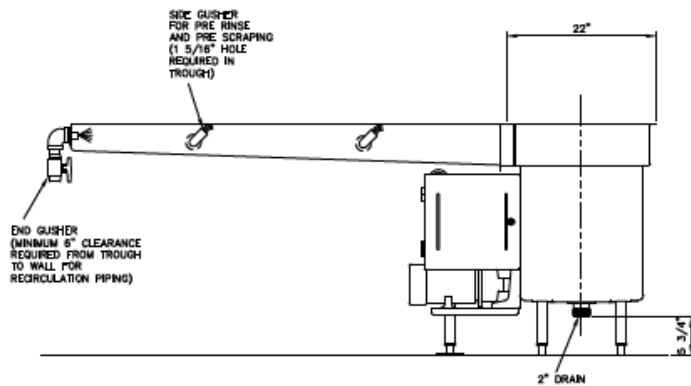


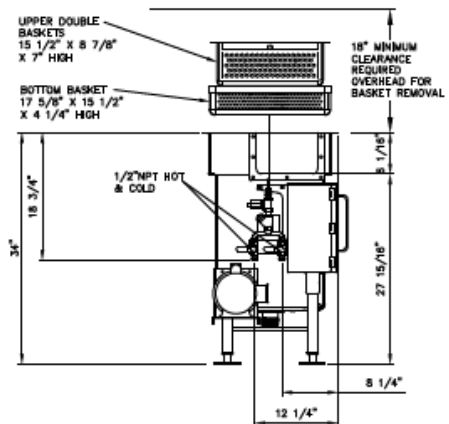
TABLE CUT OUT DETAILS



TOP FLANGE DETAILS

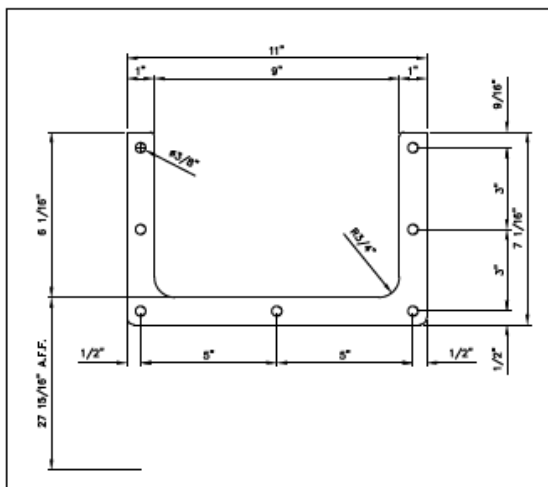


TROUGH COLLECTOR DETAILS WITH TROUGH

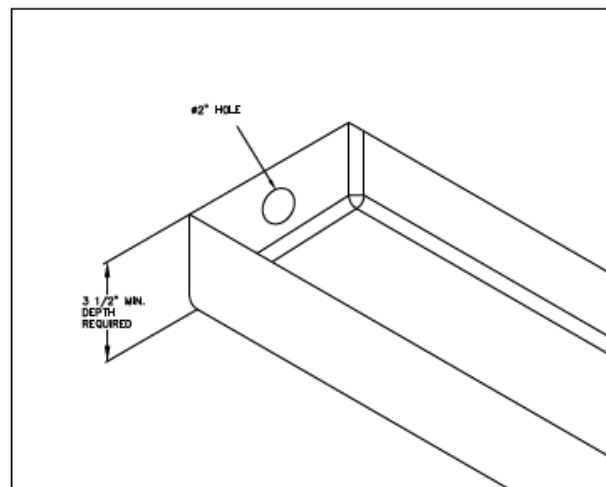


SECTION A-A

TROUGH FLANGE DETAILS

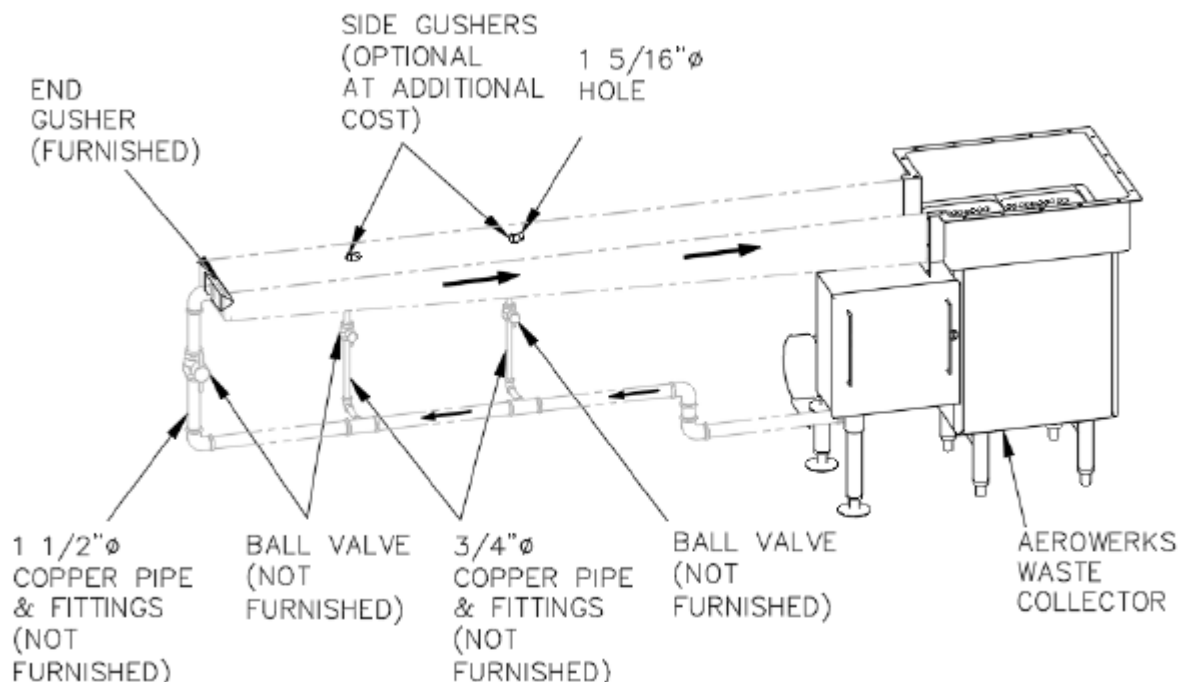


END GUSHER CUT OUT DETAILS



HydroSave

Square Waste Collector

**RECIRCULATION PLUMBING DETAILS
(NOT FURNISHED)****RECIRCULATION PLUMBING NOTES:**

- Recirculation pipe under the table to HydroSave Waste Collector must be done by plumbing contractor.
- There must be minimum 6" clearance from wall to trough for recirculated pipe.
- A 1 1/2" gusher valve must be installed to regulate the flow of the end gusher.
- A 3/4" gusher valve for each side gusher (optional) must be installed to regulate the flow of the side gushers.
- Make all plumbing connections in accordance with national and local plumbing codes.

ELECTRICAL SPECIFICATION

AVAILABLE POWER SUPPLY	120V/30A/1Ø	208V/15A/1Ø	208V/15A/3Ø	480V/15A/3Ø
MOTOR H.P.	1.1/1.5	1.1/1.5	1.1/1.5	1.1/1.5
FULL LOAD (A)	22	11	8.1	4.6
MAX OVER CURRENT PROTECTION (A)	30	15	15	15
SELECTOR	<input type="checkbox"/>	<input type="checkbox"/>	<input type="checkbox"/>	<input type="checkbox"/>

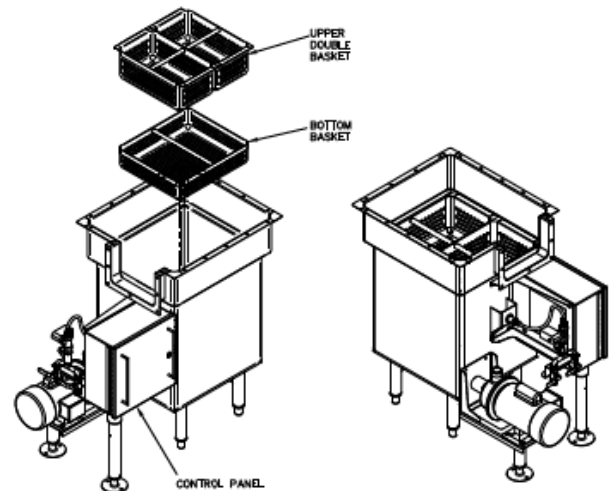
HydroSave

Square Waste Collector

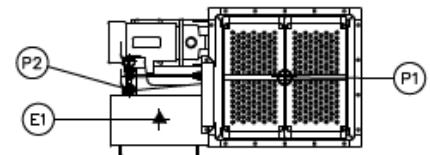
- WATER TIGHT CABLING
- ELECTRICAL SHOCK PREVENTION
- MOTOR WITH OVERLOAD PROTECTION
- 24VDC LOW VOLTAGE CONTROL CIRCUIT

PLUMBING & ELECTRICAL CONNECTIONS

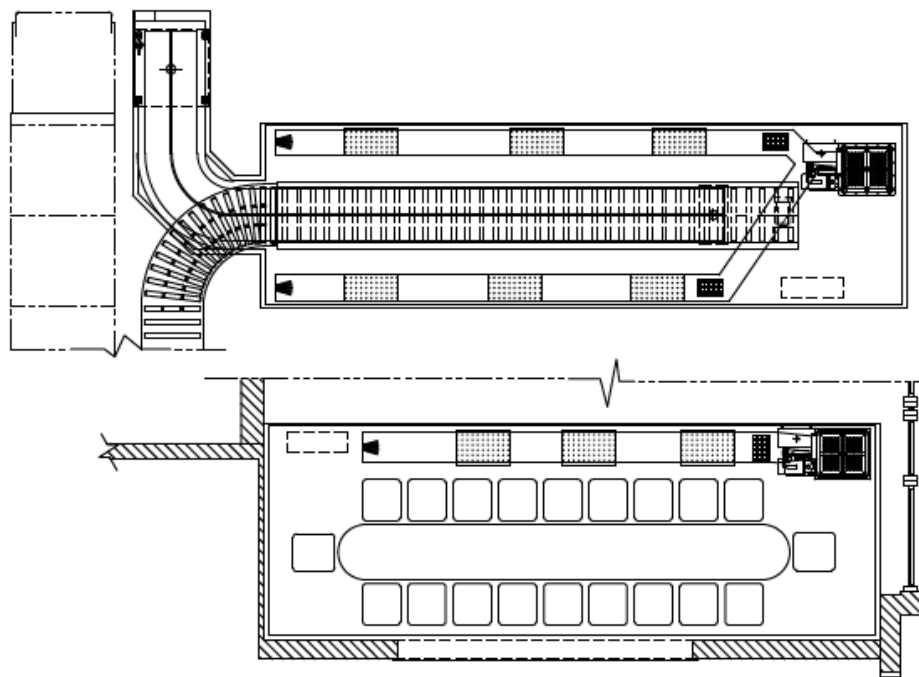
P1	2" DIA. DRAIN
P2	1/2" DIA. HOT & COLD WATER SUPPLY
E1	WASTE COLLECTOR ELECTRICAL POWER



ISOMETRIC VIEWS



TYPICAL HYDROSAVE WASTE COLLECTOR INSTALLATION



25'-0" LONG & 12" WIDE TROUGH WITH SIDE GUSHERS SPACED 3'-0" - 4'-0" APART TO ACCOMMODATE OPERATORS.